



Advanced Heating  
& Hot Water Systems

# MC Series



Ultra High  
Efficiency  
Condensing  
Gas Fired  
Heater



Fighting the High Cost of Heating

Advanced 21st century space age composite construction provides extra durability and long life in a fully condensing appliance



Best overall value for a high efficiency, condensing, gas fired heater today!

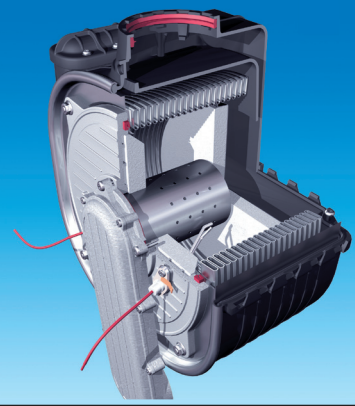
- Micro-processor control system
- Quiet operation
- Compact design
- Light weight plastic cabinet that is dent resistance
- Ease of serviceability
- Fully modulating burner
- Up to .95 EF

- Built-in DHW Priority and Outdoor Air Reset capability
- Ability to cascade up to 8 heaters Wall hung with all mechanical connections on bottom of unit
- Vents with 2" Schedule 40 PVC pipe
- Environmentally friendly
- Ultra low NOx emission

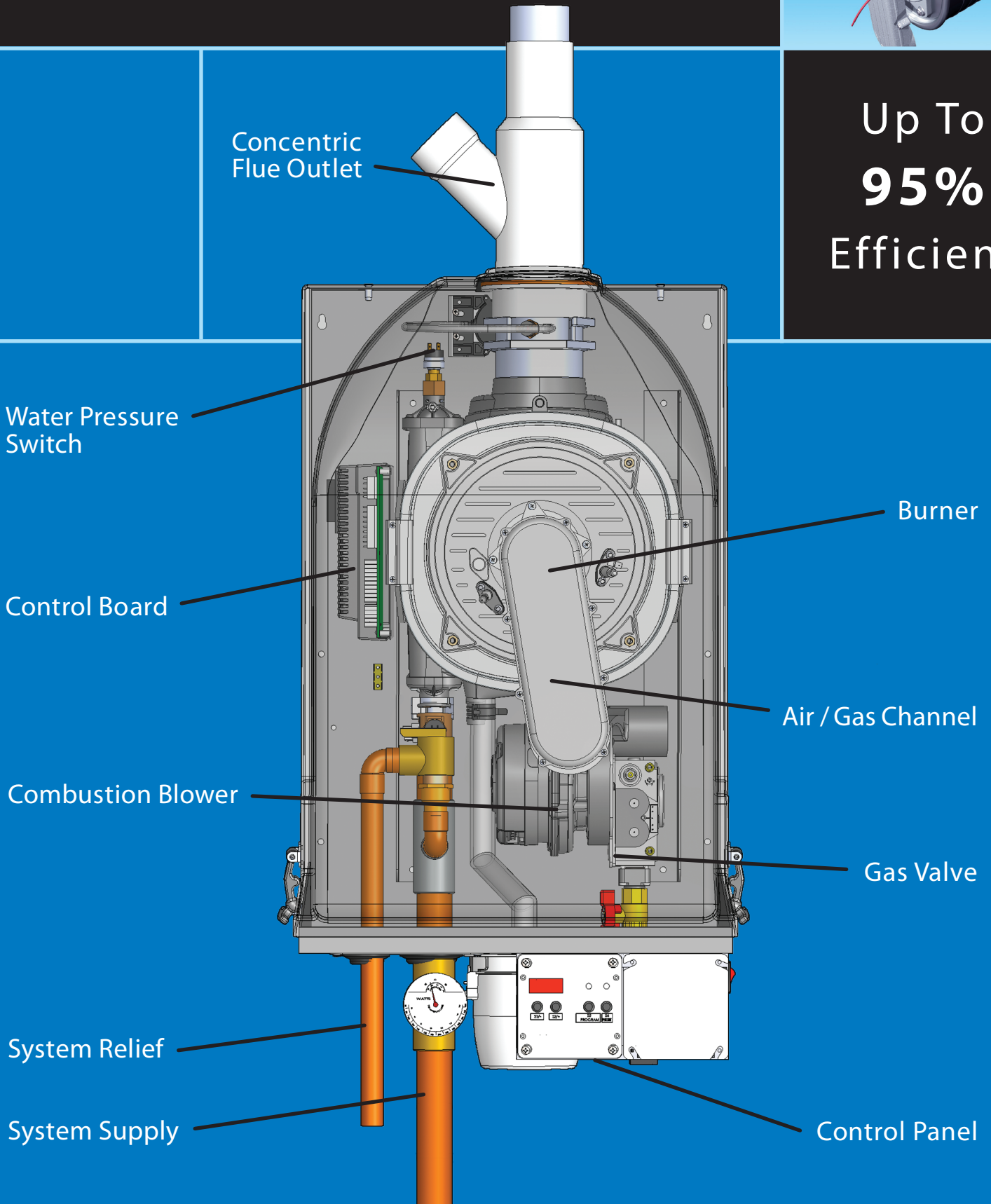
## MC Series

Fighting the High  
Cost of Heating!

# Stainless steel heat exchanger for higher corrosion resistance



Up To  
**95%**  
Efficient

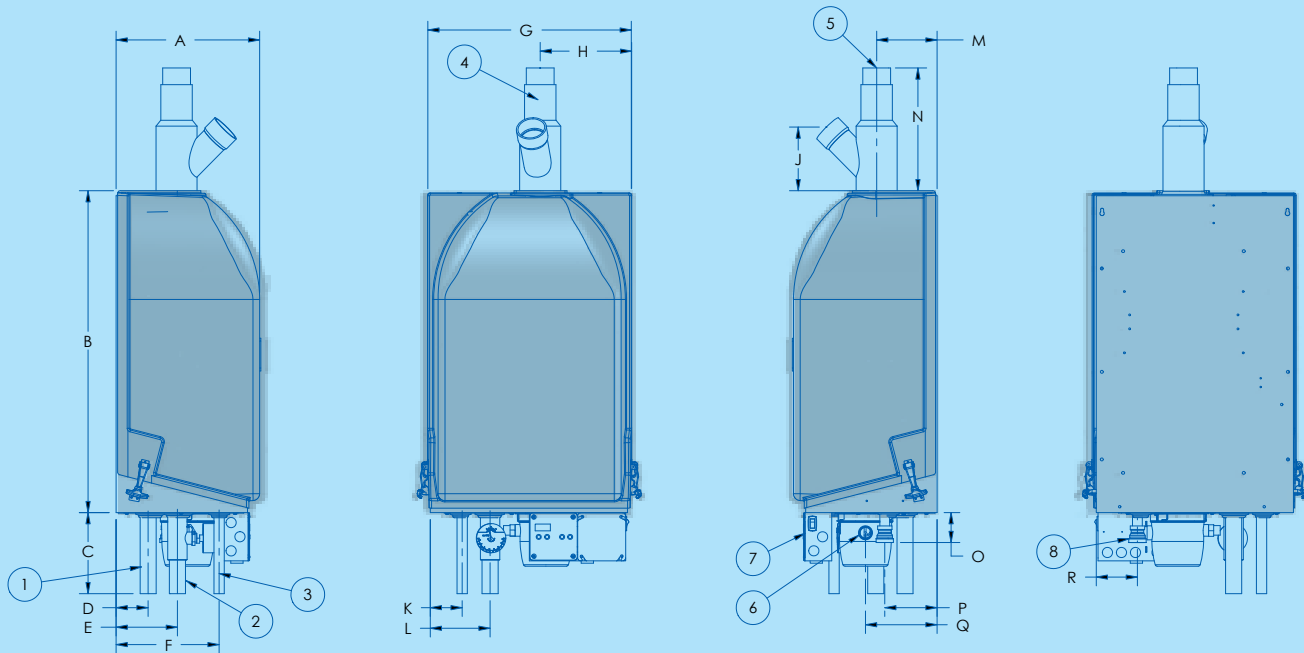


# MC Series Heater Dimensions and Specifications

- 1 SYSTEM RETURN
- 2 SYSTEM SUPPLY
- 3 SYSTEM RELIEF

- 4 COMBUSTION AIR INLET CONNECTION
- 5 EXHAUST VENT CONNECTION
- 6 CONDENSATE CUP/DRAIN ASSEMBLY

- 7 ELECTRICAL BOX/CONTROL PANEL
- 8 GAS LINE CONNECTION



MC Series Model	A	B	C	D	E	F	G	H	J	K	L	M	N	O	P	Q	R	S
MC50	12.50	27.50	7.00	2.75	5.25	9.00	17.25	7.75	5.50	2.75	5.25	5.00	9.00	2.75	4.00	6.50	10.25	4.00
MC80	12.50	27.50	7.00	2.75	5.25	9.00	17.25	7.75	5.50	2.75	5.25	5.00	9.00	2.75	5.25	6.50	10.25	4.00
MC99	13.50	27.50	7.00	2.75	6.50	10.25	17.25	7.75	5.50	2.75	5.25	6.00	9.00	2.75	7.75	6.50	11.25	4.00
MC120	13.50	27.50	7.00	2.75	6.50	10.25	17.25	7.75	5.50	2.75	5.25	6.00	9.00	2.75	7.75	6.50	11.25	4.00

MC Series Model	BTU / Input Range	Air Input / Exhaust Vent Size	System Relief Pipe Size	Supply & Return Pipe Size	Gas Line Connection	Energy Factor*	Heater Volume	Approx. Shipping Weight
MC50	18,000-50,000	2.00	.75	1.25	.75	.93	.58	71 LBS
MC80	19,000-80,000	2.00	.75	1.25	.75	.93	.58	74 LBS
MC99	44,000-99,000	2.00	.75	1.25	.75	.95	.58	84 LBS
MC120	44,000-120,000	2.00	.75	1.25	.75	.95	.58	84 LBS

\* Energy Factor is the ratio of useful energy output from the heater to the total amount of energy delivered to the heater. The higher the EF is, the more efficient the heater

### Standard Features on all models

- Modulating Burner: 3 to 1 turndown
- Two Stage Operation for Central Heating and DHW
- Energy Star Rated
- Direct Vent Sealed Combustion 2" PVC Venting
- 30 PSI Relief Valve
- Direct Spark Ignition System
- High Grade Stainless Steel Woven Fiber Mesh Burner
- Ultra Low NOx Operation
- Low Gas Pressure Operation
- Zero Clearance to Combustibles
- Terminal Strip for Ease of Field Wiring
- Natural to LP Gas Conversion
- Inlet and Outlet Temperature Sensors
- Central Heating Pump Relay w/Freeze Protection
- Wall Mounts Save Floor Space

### Standard Features on all models (cont.)

- On/Off Switch
- 12 Year Limited Warranty
- Alarm Contact
- Digital Operating Control
- LED Display System Operation
- 120 Volt Convenience Outlet for Condensation Pump
- Outside Termination Fittings - Tee 2" and Coupling 2"

### Optional Equipment

- Outdoor Air Reset Sensor
- Indirect Tank Sensor
- Condensation Neutralization Kit (Part #N1100)
- Side Wall Vent (Part #V500)
- Concentric Vent Kit (Part #KGAVT0501CVT)
- Condensation Pump (Part #554200)