



Cross-Linked Polyethylene  
x Aluminum  
x Cross-Linked Polyethylene

**For Hydronic Radiant Heating,  
Snowmelting and Hydronic Piping**

### PressAll TOOLS

15" PressTool with interchangeable jaws in 1/2", 5/8", and 3/4" sizes.



19" PressTool with interchangeable jaws in 1/2", 5/8", 3/4", and 1" sizes.



ECP Crimp and PressTool with interchangeable jaws coming soon.



### RadiantPEX-AL Fitting Systems



Watts Radiant offers three jobsite-proven connection systems that are made to the ASTM F-1281 standard for pipe and fittings.

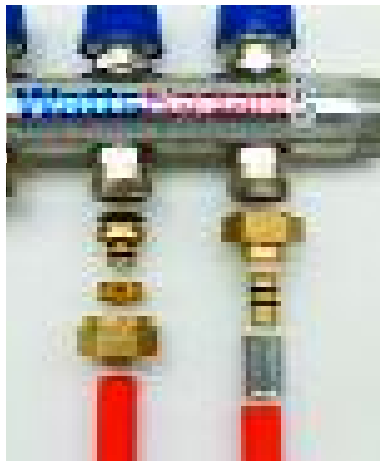
#### ALEX Press Fittings:

This proven permanent connection features a brass body with double o-ring seals, stainless steel sleeves and a polymer insulator against the pipe end. Ask for Press, threaded or sweat ends.



#### ALEX Compression Fittings:

All-brass body fitting seals without special tools with double o-ring seals and a polymer insulator against the pipe end. Ask for Compression, threaded or sweat ends.



#### SS-T20 Compression and Press fittings:

These fittings are for Stainless Steel or T20 copper manifolds.



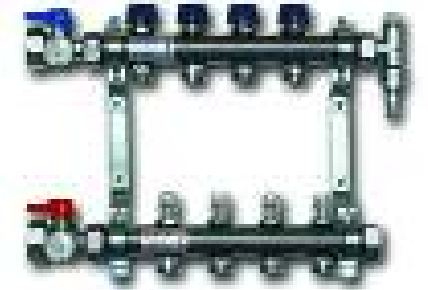
### Codes, Listings, and Standards.

RadiantPEX-AL is manufactured in accordance with American Standard Testing Methods (ASTM) F-1281, is tested and listed by the National Sanitation Foundation (NSF-PW Standards 14 and 61 and NSF-rfh), and carries the UPC certification mark, as approved by the International Association of Plumbing and Mechanical Officials (IAPMO).

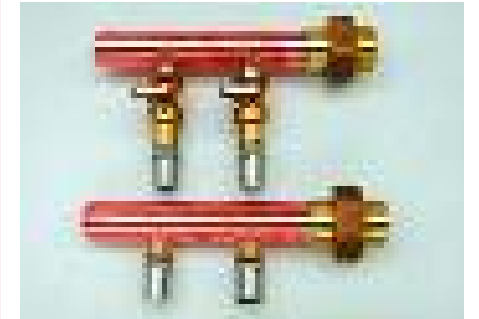
### RadiantPEX-AL Guarantee.

All RadiantPEX-AL carries a 25-year warranty for residential and commercial heating and snowmelting applications.

### RadiantPEX-AL manifolds



Use RadiantPEX-AL SS-T20 Press and Compression fittings with Watts Radiant's Stainless Steel manifolds.



Watts Radiant copper manifolds with built-in Press fittings



Watts Radiant copper manifolds with built-in compression fittings.



A subsidiary of Watts Water Technologies, Inc.  
NYSE: WTS

**In the United States**  
Watts Radiant, Inc.  
4500 Progress Place  
Springfield, MO 65803  
1-800-276-2419 toll-free  
417-864-6108 phone  
417-864-8161 fax  
www.wattsradiant.com

**In Canada**  
Watts Industries-Canada  
5435 North Service Road  
Burlington, ON L7L 5H7  
1-888-208-8927 toll-free phone  
905-332-4090 phone  
1-888-882-1979 toll-free fax  
905-332-7068 fax  
www.wattscanada.ca

# Watts Radiant

Floor Heating & Snowmelt



A subsidiary of Watts Water Technologies, Inc  
Quality since 1874 NYSE: WTS



**Cross-Linked Polyethylene x Aluminum  
x Cross-Linked Polyethylene**

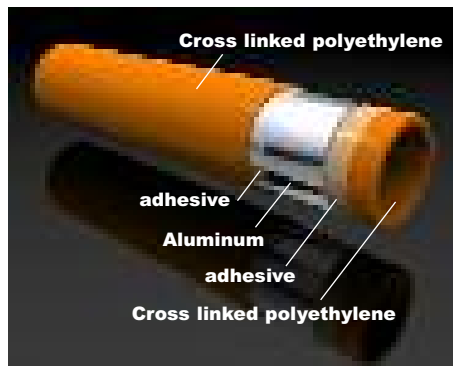
**Ask for ALEX™ Strong for the long run™**

**The RadiantPEX-AL Advantage.**

RadiantPEX-AL is a composite pipe engineered for radiant floor heating. We call it ALEX™. It's proven, long lasting and maintenance free. Installers like it because it's lightweight, durable and can be shaped to fit any jobsite. The aluminum layer protects boiler systems against corrosion and it has superior temperature and pressure ratings.

**RadiantPEX-AL Is Built to Last.**

ALEX Pipe and fittings are manufactured to American Standard Testing Methods for composite radiant pipe (ASTM F-1281). Included are requirements and test methods for materials, workmanship, dimensions, environmental stress cracking, sustained hydrostatic pressure strength, thermo-cycling resistance and bend strength, among other tests. RadiantPEX-AL meets or exceeds these specifications.



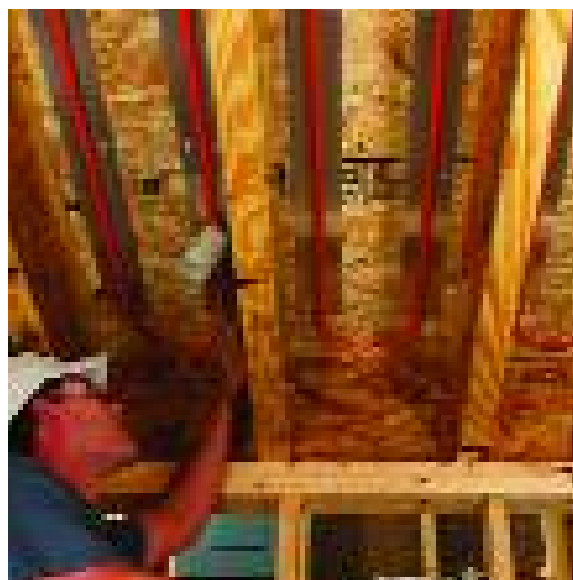
**ALEX is actually a five layer construction**



**RadiantPEX-AL stays where you want it, making tie-down easier.**



**RadiantPEX-AL works great with SubRay for a thin profile subfloor.**



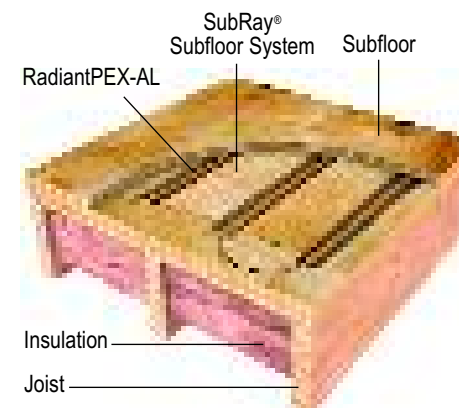
**You can install RadiantPEX-AL on the underside of a subfloor, using underfloor plates.**



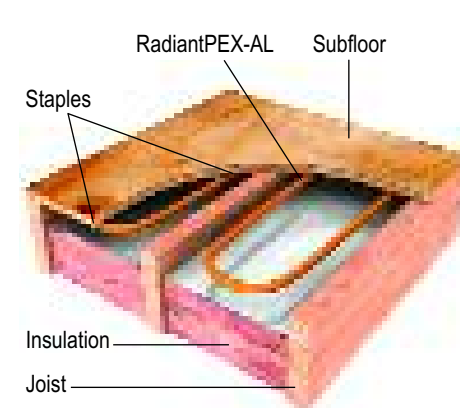
**RadiantPEX-AL bends to conform to the shape of outdoor steps for snowmelting.**

**Use RadiantPEX-AL for Distribution Piping.**

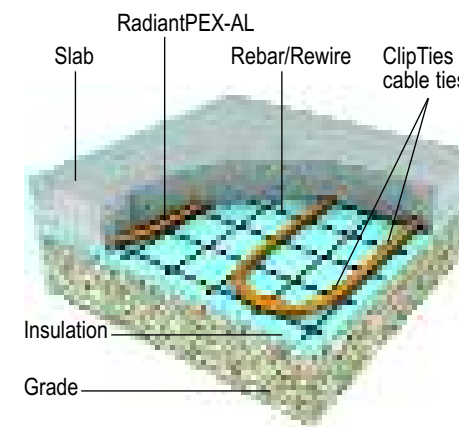
Use RadiantPEX-AL as supply and return piping to manifolds, fan coils, baseboards and radiators. Once you try it, you'll never go back to using expensive, time-consuming copper.



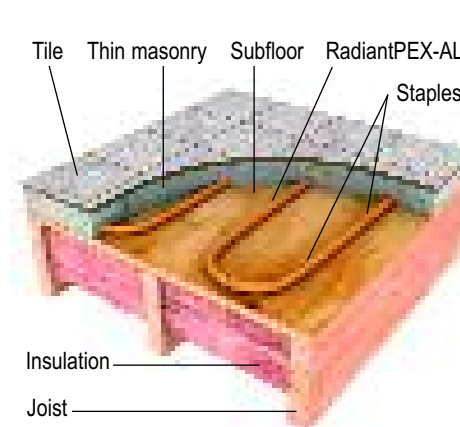
**Install ALEX over subfloors with the SubRay system.**



**Staple up ALEX below subfloors to heat the room above.**



**Pour concrete over ALEX for heating or snowmelting.**



**Install ALEX in a thin concrete, gypsum or self-leveling floor.**

**RadiantPEX-AL Specifications.**

| Coils              | NOM. I.D. | NOM. O.D. | MIN. BEND RADIUS | STANDARD COIL LENGTHS | FLUID CAPACITY PER 1000' |
|--------------------|-----------|-----------|------------------|-----------------------|--------------------------|
| 1/2" RadiantPEX-AL | 0.47 in   | 0.63 in   | 3.2 in           | 300'/500'/1000'       | 9.1 Gal.                 |
| 5/8" RadiantPEX-AL | 0.63 in   | 0.79 in   | 4.0 in           | 100'/300'/1200'       | 16.2 Gal.                |
| 3/4" RadiantPEX-AL | 0.79 in   | 0.98 in   | 5.5 in           | 100'/300'/500'        | 25.3 Gal.                |
| 1" RadiantPEX-AL   | 0.98 in   | 1.26 in   | 6.5 in           | 100'/300'             | 39.5 Gal.                |

| Sticks             | NOM. I.D. | NOM. O.D. | MIN. BEND RADIUS | STICK LENGTH | BUNDLE QUANTITY |
|--------------------|-----------|-----------|------------------|--------------|-----------------|
| 1/2" RadiantPEX-AL | 0.47 in   | 0.63 in   | 3.2 in           | 20 ft        | 25              |
| 5/8" RadiantPEX-AL | 0.63 in   | 0.79 in   | 4.0 in           | 20 ft        | 25              |
| 3/4" RadiantPEX-AL | 0.79 in   | 0.98 in   | 5.5 in           | 20 ft        | 25              |
| 1" RadiantPEX-AL   | 0.98 in   | 1.26 in   | 6.5 in           | 20 ft        | 10              |

## For Residential, Commercial and Snowmelt Applications

Job Name \_\_\_\_\_

Contractor \_\_\_\_\_

Job Location \_\_\_\_\_

Approval \_\_\_\_\_

Engineer \_\_\_\_\_

Contractor's P.O. No. \_\_\_\_\_

Approval \_\_\_\_\_

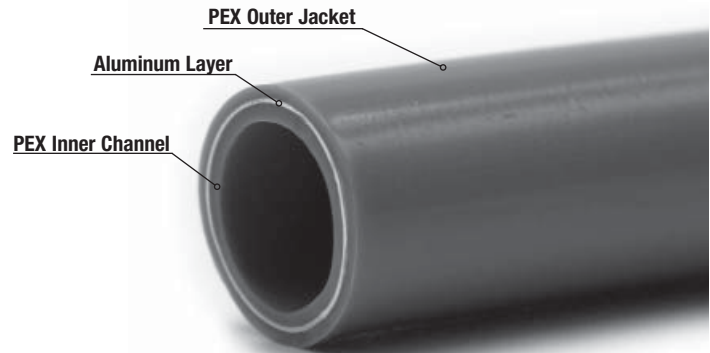
Representative \_\_\_\_\_

# RadiantPEX-AL™

## RadiantPEX-AL Tube

Sizes: 1/2", 5/8", 3/4", 1"

Watts Radiant's RadiantPEX-AL is a multi-layered, cross-linked polyethylene tubing with an aluminum inner core for radiant floor heating and snowmelting applications and distribution piping. RadiantPEX-AL is manufactured with an integral aluminum oxygen layer that limits oxygen diffusion through the walls of the tubing to less than 0.006g/m<sup>3</sup>/day at 40°C (104°F) water temperature.



RadiantPEX-AL

### Specifications

System shall be installed using Watts Radiant RadiantPEX-AL. All connections shall be made using Watts Radiant's Press or Compression fittings and in accordance with all corresponding installation guidelines.

| MAX TEMPERATURE | MAX PRESSURE |
|-----------------|--------------|
| 200°F           | 100 psi      |
| 180°F           | 125 psi      |
| 140°F           | 160 psi      |
| 73°F            | 200 psi      |

### Installation

RadiantPEX-AL must be installed in accordance with all Watts Radiant installation procedures, including information provided in the RadiantPEX-AL installation manual and guidelines.

**RadiantPEX-AL connections should not be used with wrot copper PEX fittings. Fittings should not be installed when the ambient temperature is below 30°F (0°C).**

### Standards and Listings



Manufactured in accordance with American society for Testing and Materials (ASTM) F-1281.



Tested and listed by the National Sanitation foundation (NSF-pw – Standards 14 and 61 and NSF-rfh).



Carries the UPC certification mark, as approved by the International Association of Plumbing and Mechanical Officials (IAPMO).

|             | MODEL #      | ORDER#   | DESCRIPTION                        | LENGTH | NOM. ID | NOM. OD | MIN. BEND RADIUS (IN) | FLUID CAPACITY (GAL/1000') |
|-------------|--------------|----------|------------------------------------|--------|---------|---------|-----------------------|----------------------------|
| COILS       | RL08-300-OR  | 81007602 |                                    | 300'   |         |         |                       |                            |
|             | RL08-500-OR  | 81007601 | 1/2" RadiantPEX-AL Coil            | 500'   | 0.47 in | 0.63 in | 3.2 in                | 9.1                        |
|             | RL08-1000-OR | 81007603 |                                    | 1,000' |         |         |                       |                            |
|             | RL10-300-OR  | 81007605 | 5/8" RadiantPEX-AL Coil            | 300'   | 0.63 in | 0.79 in | 4.0 in                | 16.2                       |
|             | RL10-1200-OR | 81007606 |                                    | 1,200' |         |         |                       |                            |
|             | RL12-100-OR  | 81007607 |                                    | 100'   |         |         |                       |                            |
|             | RL12-300-OR  | 81007608 | 3/4" RadiantPEX-AL Coil            | 300'   | 0.79 in | 0.98 in | 5.5 in                | 25.3                       |
|             | RL12-500-OR  | 81007609 |                                    | 500'   |         |         |                       |                            |
|             | RL16-100-OR  | 81007610 | 1" RadiantPEX-AL Coil              | 100'   | 0.98 in | 1.26 in | 6.5 in                | 39.5                       |
| RL16-300-OR | 81007611     |          | 300'                               |        |         |         |                       |                            |
| STIX        | RL08-20-OR   | 81008573 | 1/2" RadiantPEX-AL Stix, 25/Bundle | 20'    | 0.47 in | 0.63 in | 3.2 in                | 9.1                        |
|             | RL10-20-OR   | 81008574 | 5/8" RadiantPEX-AL Stix, 25/Bundle | 20'    | 0.63 in | 0.79 in | 4.0 in                | 16.2                       |
|             | RL12-20-OR   | 81008575 | 3/4" RadiantPEX-AL Stix, 25/Bundle | 20'    | 0.79 in | 0.98 in | 5.5 in                | 25.3                       |
|             | RL16-20-OR   | 81008576 | 1" RadiantPEX-AL Stix, 10/Bundle   | 20'    | 0.98 in | 1.26 in | 6.5 in                | 39.5                       |

Watts product specifications in U.S. customary units and metric are approximate and are provided for reference only. For precise measurements, please contact Watts Technical Service. Watts reserves the right to change or modify product design, construction, specifications, or materials without prior notice and without incurring any obligation to make such changes and modifications on Watts products previously or subsequently sold.

 **Watts Radiant**  
Floor Heating & Snowmelting

A subsidiary of Watts Water Technologies, Inc.

**USA:** 4500 East Progress Place, Springfield, MO 65803; www.wattsradiant.com

**Canada:** 5435 North Service Rd., Burlington, ONT. L7L 5H7; www.wattscanada.ca